



### ONLY OKITE® FOR KITCHEN, INTERIORS.

When only the best will do choose OKITE®.

Transform your interior into the home of your dreams. Beauty and functionality combined in one product.

Only OKITE®, only the best.



**OKITE®**  
www.okite.com

#### EUROPE

##### SIC s.r.l.

Corso Vittorio Emanuele II,30  
20122 MILANO (MI)  
Italia  
Tel.: +39 02 870 72 836

##### Seieffe UK Ltd

104 High Street  
London Colney AL2 1QL  
Tel. +44 01992 470 801  
Fax. +44 01992 470 799

#### USA

##### Seieffe Corporation

Importer & Master Distributor  
12227 K FM 529  
Northwoods Industrial Park  
Houston - Tx 77041  
United States

Tel.: +1 713 849 3800  
Toll Free:+1 866 654 8397

okite@okite.com  
www.okite.com



Follow us:



**OKITE®**  
www.okite.com

# OKITE® THE QUARTZ SURFACE.

FOR YOUR KITCHEN, YOUR HOME, FOR YOU.

A WIDE RANGE OF COLORS AND COLLECTIONS. A WORLD OF POSSIBILITIES.

Choose from the many solutions offered by the OKITE® range, to customise your interiors.

The careful selection of raw materials and their unique combination make OKITE® non-porous and highly resistant to staining.

OKITE® does not absorb liquids, so it resists many common products such as coffee, wine, lemon juice, olive oil and vinegar.

OKITE®'s non-porous nature means it has a high degree of resistance to acids too.

Additionally OKITE®'s strength makes it resistant to heat and scratches.

### NON-POROUS AND RESISTANT TO STAINING



### STRONGER THAN MARBLE OR GRANITE

OKITE® means quality, elegance and durability.

OKITE® is a specially engineered surfacing material, created from the perfect combination of three elements: quartz (up to 93%), polyester resin and natural pigments.

Quartz is the secret of OKITE® strength and durability, in fact it is the fourth strongest element in the world, with only diamond, sapphire and topaz being stronger.

Our Research & Development Center carefully selects the quartz for OKITE®, using only the purest renewable sources.



## EASY TO CLEAN

OKITE® maintenance could not be easier!

For daily cleaning, all you need to use is a soft cloth, hot water and a normal liquid detergent.

For extra care on stubborn stains, you will only need a non-abrasive sponge and normal kitchen detergent. Good rinsing and drying afterwards will do the rest.



### MAXIMUM HYGIENE

The non-porous surface of OKITE® prevents the absorption of liquids or food that can develop into harmful bacteria.

OKITE® does not need any additional chemical protection.

This is why OKITE® gives maximum hygiene for you and your family!

## THE FINEST ITALIAN TECHNOLOGY AND INNOVATION FOR YOUR HOME AND YOUR INTERIORS.

OKITE® is the result of years of intense research, development and refinement carried out exclusively by our Research & Development Center at Seieffe Industrie in Montesarchio, Italy.

Whilst originally developed as a kitchen surface, OKITE® has evolved into a versatile product that can be used for many other interior applications, in the bathroom, for flooring and on walls.

OKITE® has set new standards in the world of quartz surfacing and is able to match all your needs.

## ENVIRONMENTALLY FRIENDLY

At the heart of our company is a strong commitment to the planet. It effects everything we do: from quartz derived from sustainable and high quality resourcing, to the use of recycled glass, to the most efficient use of natural materials, to our sustainable production chain. We try to minimise our impact on the planet and to focus on people in any way we can.



## NETWORK OF HIGHLY-QUALIFIED FABRICATORS

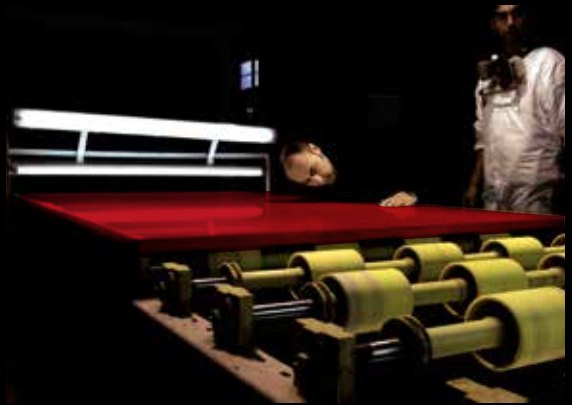


Seieffe Industrie - Montesarchio (BN)

From production to instalment, the whole OKITE® chain works seamlessly to offer you only the best.
















This is why we allow only the most highly qualified fabricators to work with OKITE®.

Their skills and our expert standards transform your ideas into beautiful reality.



Quality Control

# OKITE® Technical Data

Simbol	Test Performed	Test Standard	Results *	Note
<b>Physical Properties</b>				
	Absorption	ASTM C 97	0.005 wt. %	Low absorption contributes to stain resistance and sanitation of OKITE.
	Bulk Density	ASTM C 97	2.38 gr/cm <sup>3</sup> 39.03 gr/in <sup>3</sup>	½" OKITE = 100.3 lbs/sq.ft. ¾" OKITE = 150.45 lbs/sq.ft. 1¼" OKITE = 250.75 lbs/sq.ft.
	Flexural Strength	ASTM C 880	5,567.6 psi (Standard Deviation 311.9)	OKITE is stronger than most natural stones.
	Thermal Expansion	ASTM E 228	5.9x10 <sup>-6</sup> in/in/°F 1.1x10 <sup>-5</sup> in/in/°C	OKITE requires only small clearances for thermal movement.
<b>Durability</b>				
	Abrasion Resistance (Taber Abraser)	ASTM C 501	187.2	OKITE resists wear and abrasion.
	Freeze-Thaw Resistance	ASTM C 1026	No defects	15 freeze-thaw cycles.
	Mohs Hardness	DIN EN 101	Quartz = 7 on Mohs scale.	Quartz can only be scratched by materials as hard as topaz (8), corundum (9), or diamond (10).
<b>Stain and Chemical Resistance and Cleanability</b>				
	Stain Resistance	ANSI Z 124.6	22 Pass (Passing criterion is 64.)	Tested with 16-hour exposure to crayon, shoe polish, ink, gentian, beet juice, grape, juice, lipstick, hair dye, iodine and tea.
	Wear and Cleanability	ANSI Z 124.6	Pass	Wear: Passes 10,000 cycles/slurry. Cleanability: Loss of light reflectance after standard detergent cleaning. (Passing criterion is ≤5%.)
	Cigarette Test	ANSI Z 124.6	Pass	No visual damage or surface ignition Tested with Marlboro, Doral and Raleigh.
	Chemical Resistance	ANSI Z 124.6	Pass	No visual damage due to 16-hour contact exposure to naphtha, ethyl alcohol, amyl acetate, 10% Ammonia, 10% citric acid, 6% urea, 3% hydrogen peroxide, clorox (S), toluene, ethyl acetate, 1-2% drano (S), acetone, pine oil, vinegar, 5% trisodium phosphate.  (S)= slight superficial effect that is removed by dry 600 grit sanding very lightly. No resulting damage after removal.
	Chemical Resistance	ASTM C 650	Slight Stain No Detrimental Effect	Tested with exposure to solution 10% HCL and 10% KOH. Overall evaluation results in no effect on the samples
	Resistance to Fungal Growth	ASTM G 21	No effect	After 21 day incubation period. Fungi spore suspension (ATCC#6205,9348,9642,9644,9645)
<b>Other</b>				
	Static Coefficient of Friction	ASTM C 1028	Dry 0.63 Wet 0.57	
	Flame Spread	ASTM E 84	Class A	

\* Average results of overall production

# OKITE® Care and maintenance

## **How to keep your OKITE® looking beautiful**

Thankfully, it's much easier than you might think.

Your highly attractive and durable non porous surface is extremely simple to clean and never needs sealing or polishing.

It's also less hassle to maintain than granite, marble, limestone or soapstone. In fact, all you need to do is follow these simple guidelines correctly to keep your OKITE® looking beautiful for years to come.

## **Standard everyday cleaning guidelines**

To clear up accidental spills, simply soak up with kitchen roll and wash with a soft cloth, warm water and liquid detergent such as "Windex®", a green alternative that is also effective is "Seventh Generation Multisurface" only if necessary.

## **Removing stubborn stains.**

To remove dried-on substances – such as chewing gum or food containing mustard or curry – and stains caused by fats, grease or water based paint, start by gently scraping away the residue material with a glass scraper. Then, clean your OKITE® top with a non-abrasive cleaning pad and household kitchen spray cleaner such as "Soft Scrub Total Kitchen®". Rinse thoroughly with warm clean water and dry the surface with a clean cloth. Repeat if necessary.

As OKITE® is harder than a steel blade, excessive scraping may leave a gray metal mark. If this happens clean the area with a recommended cleaner.

## **Cleaning textured surfaces such as the Aida Collection**

For normal everyday cleaning, simply soak up with kitchen roll and wash with a soft cloth, warm water and liquid detergent such as "Windex®", a green alternative that is also effective is "Seventh Generation Multisurface Cleaner®". For any greasy, oily marks or stains, use a kitchen spray degreaser such as "Soft Scrub Total Kitchen®" for 30 seconds, then rinse well and dry with a clean cloth. For more stubborn marks or stains, use "Soft Scrub Gel with Bleach Cleanser®" on a wet sponge. Work in a large circular motion and clean the entire surface area. Rinse well with hot soapy water and dry with a clean cloth. For any other marks that seemingly can't be removed with normal cleaning, use a wet scouring pad, such as yellow Scotch-Brite®, with a little abrasive cleanser. Work in a large circular motion and clean the entire surface area. Rinse well with hot water and dry with a clean towel or cloth. Please use this cleaning method only if necessary, as continued use of this method may eventually dull the surface of your OKITE® top. Honed and AIDA Collection colors are more sensitive to grease or finger prints and may require extra care during routine cleaning.

## **How to remove ink stains from OKITE®**

The most important step to remove ink stain from OKITE® is to act immediately, to avoid the ink penetrating the surface.

## **To remove ink stains from your OKITE® stonework, proceed as follows:**

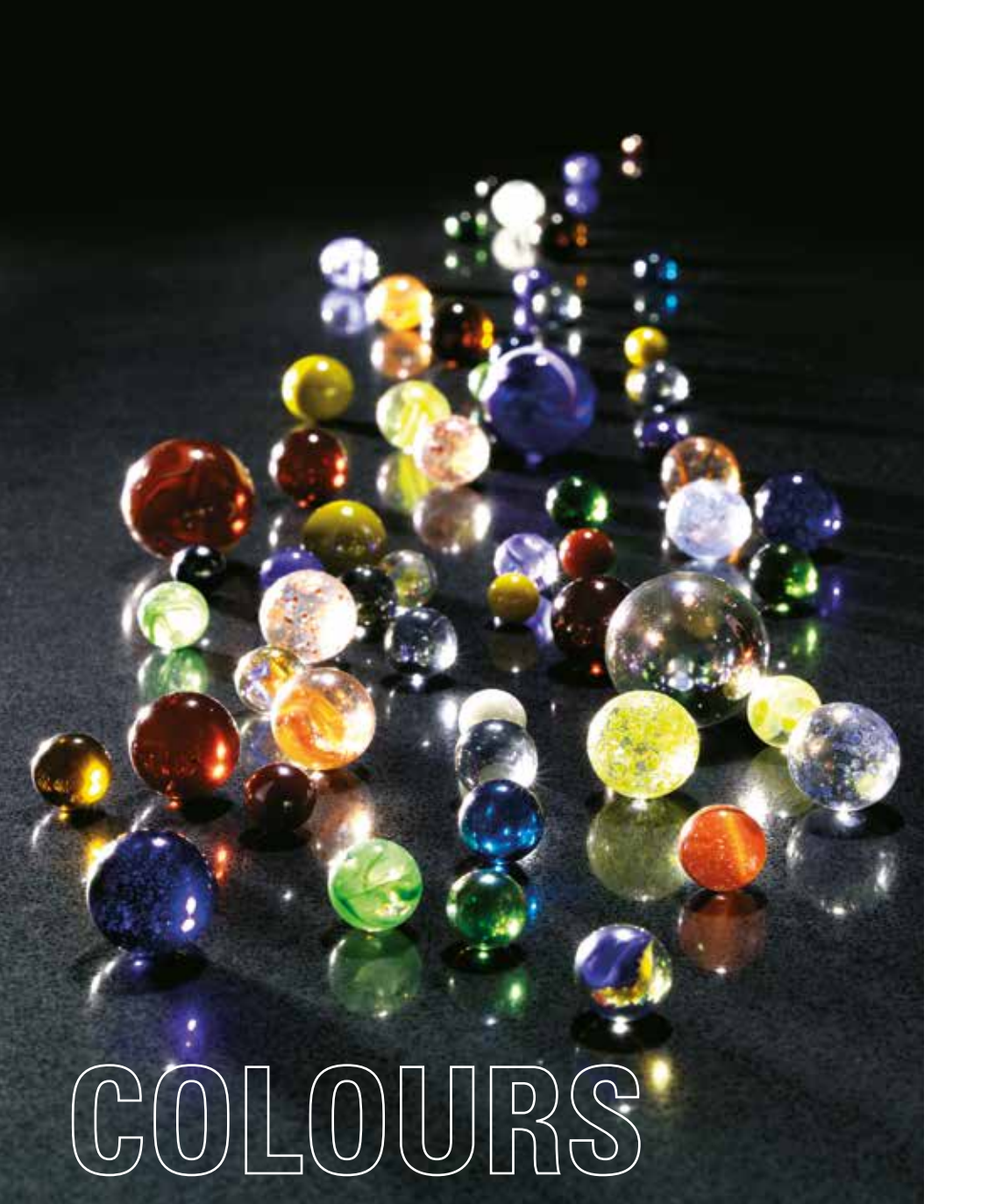
- Wear protective gloves;
- Clean the area with Windex and a clean micro ber cloth;
- Pour 91% Isopropyl Alcohol over the ink stain and let it work for 15-20 seconds. Isopropyl Alcohol will help break the stain and dilute it;
- Remove Isopropyl Alcohol with a paper cloth, making sure that cabinets and/or other items are not contaminated by alcohol or by the diluted ink;
- If the stain does not disappear completely, use "Soft Scrub Gel with Bleach Cleanser®" on a wet sponge. Work in a large circular motion and clean the entire surface area. - Rinse well with hot soapy water and dry with a clean cloth.
- Trash the gloves, the micro ber cloth, the paper towels and the wet sponge used;

## **To further protect your OKITE®**

On Honed and AIDA colors, remove any stain as it happens;

Do not seal or have sealed your OKITE®. Differently from granite, marble, limestone, soapstone or glass & concrete based surfaces, OKITE® never needs sealing or polishing;

Always use hot pads or trivets to protect OKITE® from heat sources, such as hot pots.



COLOURS

**RANGE**

# Linea PROJECT



## **5009 Bianco Pro**

Thickness 20 - 30 mm

*Finishing: Polished*



## **5010 Beige Pro**

Thickness 20 - 30 mm

*Finishing: Polished*



## **5006 Visone**

Thickness 20 - 30 mm

*Finishing: Polished*



## **5008 Corvino**

Thickness 20 - 30 mm

*Finishing: Polished*



# Linea **EASY**



## **1705 Easy White**

Thickness 20 - 30 mm

*Finishing: Polished - Aida - **TEXTURE***



## **1706 Easy Beige**

Thickness 20 - 30 mm

*Finishing: Polished - Aida - **TEXTURE***



## **1707 Easy Brown**

Thickness 20 - 30 mm

*Finishing: Polished - Aida - **TEXTURE***



## **1710 Easy Bronze**

Thickness 20 - 30 mm

*Finishing: Polished - Aida - **TEXTURE***



## **1709 Easy Grey**

Thickness 20 - 30 mm

*Finishing: Polished - Aida - **TEXTURE***

# OKITE® Collection



## **1663 Bianco Classico**

Thickness 20 - 30 mm

*Finishing: Polished - Aida - **TEXTURE***



## **1717 Roman Stone**

Thickness 20 - 30 mm

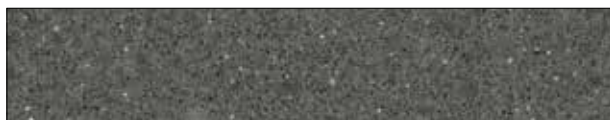
*Finishing: Polished - Aida - **TEXTURE***



## **1432 Grigio Chiaro**

Thickness 20 - 30 mm

*Finishing: Polished - Aida - **TEXTURE***



## **1405 Grigio Scuro**

Thickness 20 - 30 mm

*Finishing: Polished - Aida - **TEXTURE***



## **1114 Nero Assoluto**

Thickness 20 - 30 mm

*Finishing: Polished*

# OKITE<sup>®</sup> Collection



## **1665 Bianco Assoluto**

Thickness 20 - 30 mm

*Finishing: Polished - Aida - **TEXTURE***



## **1896 Bianco Carrara**

Thickness 20 - 30 mm

*Finishing: Polished - Aida - **TEXTURE***



## **1809 Calacatta Gold**

Thickness 20 - 30 mm

*Finishing: Polished - Aida - **TEXTURE***



## **1810 Calacatta White**

Thickness 20 - 30 mm

*Finishing: Polished - Aida - **TEXTURE***



## **2005 Prisma Bianco**

Thickness 20 - 30 mm

*Finishing: Polished*



## **1931 Arabescato Verde**

Thickness 20 - 30 mm

*Finishing: Polished - Aida - **TEXTURE***



## **4001 White Avion**

Thickness 20 - 30 mm

*Finishing: Polished - Aida - **TEXTURE***



### **1926 Crema Botticino**

Thickness 20 - 30 mm

*Finishing: Polished - Aida - **TEXTURE***



### **1642 Crema**

Thickness 20 - 30 mm

*Finishing: Polished - Aida - **TEXTURE***



### **1715 Afyon**

Thickness 20 - 30 mm

*Finishing: Polished - Aida - **TEXTURE***



### **2253 Moka Cream**

Thickness 20 - 30 mm

*Finishing: Polished - Aida - **TEXTURE***



### **1916 Grigio Assoluto**

Thickness 20 - 30 mm

*Finishing: Polished - Aida - **TEXTURE***



### **1932 Grigio Bardiglio**

Thickness 20 - 30 mm

*Finishing: Polished - Aida - **TEXTURE***



### **1911 Grigio Nordico**

Thickness 20 - 30 mm

*Finishing: Polished - Aida - **TEXTURE***



### **1915 Antracite**

Thickness 20 - 30 mm

*Finishing: Polished - **TEXTURE***



### **4002 Ocean Grey**

Thickness 20 - 30 mm

*Finishing: Polished - **TEXTURE***



### **4003 Mystic Grey**

Thickness 20 - 30 mm

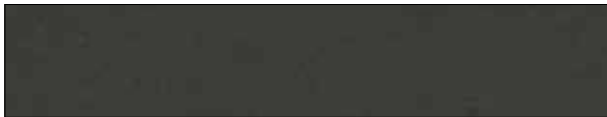
*Finishing: Polished - **TEXTURE***



### **1813 Marrone Imperiale**

Thickness 20 - 30 mm

*Finishing: Polished - **TEXTURE***



### **1701 Verde Medea**

Thickness 20 - 30 mm

*Finishing: Polished - **TEXTURE***



### **1801 Verde Oriente**

Thickness 20 - 30 mm

*Finishing: Polished - **TEXTURE***



### **2009 Prisma Nero**

Thickness 20 - 30 mm

*Finishing: Polished*



### **4004 Marquinia Black**

Thickness 20 - 30 mm

*Finishing: Polished - **TEXTURE***



### **1804 Nero Reale**

Thickness 20 - 30 mm

*Finishing: Polished - **TEXTURE***

# OKITE® Nature Collection



## **8050 Statuario Extra**

Thickness 20 - 30 mm

*Finishing: Polished*



## **8061 Carrara Gioia**

Thickness 20 - 30 mm

*Finishing: Polished*



## **8062 Grigio Oriente**

Thickness 20 - 30 mm

*Finishing: Polished*



## **8063 Fior di Bosco**

Thickness 20 - 30 mm

*Finishing: Polished*



## **8064 Nero di Ormea**

Thickness 20 - 30 mm

*Finishing: Polished*

