

QUARTZ SURFACING
2019

ILLUMINATION
SYSTEM

MADE IN ITALY 



OKITE®
OKITE.COM

OKITE® Translucent Collection

ILLUMINATION SYSTEM

LED LIGHT PANEL

Customizable

- Any size up to 4' x 8'

Bright & Even Illumination

- 3D V-Cutting technology
- High brightness (2,000 - 10,000 LUX)
- Superior consistent light quality

Long Lifespan

- Patented heat sink technology to maximize LED lifespan (70,000 hours)

Energy Efficient

- Low power consumption (70% less than fluorescent)
- Energy saving and maintenance free

Warranty

- Advanced 3-year warranty



OKITE® Specialty Collection

LPV-60

60W Single Output Switching Power Supply



Features

- Constant voltage design
- Universal AC input / Full range
- Withstand 300VAC surge input for 5 seconds
- Protections: Short circuit / Overload / Over voltage
- Cooling by free air convection
- Fully encapsulated with IP67 level
- Fully isolated plastic case
- Class II power unit, no FG
- Class II power unit
- Pass LPS
- Suitable for LED lighting & moving sign applications
- 100% full load burn-in test
- Low cost, high reliability
- 2 year warranty

LPV-60

60W Single Output Switching Power Supply



Remote

Model: M1/M2/M3
 Working Voltage: DC3V (battery CR2032)
 Working Frequency: 433.92MHz
 Remote Distance: 131 Feet - 164 Feet
 Working Temp: -4°F - 131°F
 Weight (N.W.): 42g

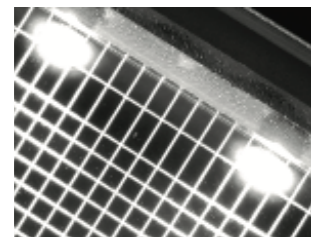
CV Receiver

Model: M4-5A
 Input Voltage: DC5V-DC24V
 Max Current Load: 6Ax3CH Max 18A
 Max Output Power: 90W/216W/432W (5V/12V/24V) Gray Scale Level: Max 4096 x 4096
 Working Temp: -22°F-131°F
 Weight (N.W.): 125g

The M series LED controller is compatible with 8 different kinds of remotes. The M4-5A receiver can receive single color/CT dimming, RGB/RGBW control functions to meet a wide range of lighting requirements. With the M series RF remotes, brightness, color as well as customizable color control modes are easily achievable. Choose the remote that is right for your application.

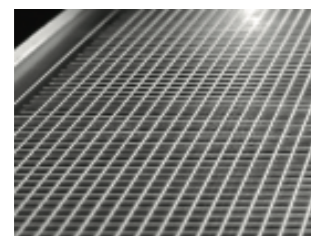
PERFECT BACKLIGHTING SOLUTION

The LED light panel is designed to emit a bright, even output of light across the entire surface of the panel. Unlike traditional light panels, which have the light source mounted on the exterior of the LGP (Light Guide Plate), our panel integrates high brightness LEDs and the heat sink into our exclusive 3D V-cutting LGP which makes it possible to produce "frameless", rectangular or special shaped LED light panels for various application needs.



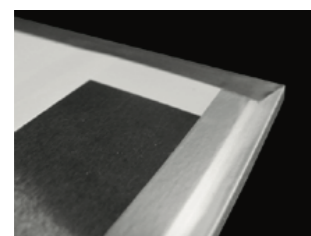
Integrated High Quality LEDs

The LED light panel integrates high quality 12V, constant voltage LEDs into the perimeter of the LED panel without the use of rigid frame materials. This process allows the LEDs to conform to almost any shape.



3D V-Groove Light Guide Plate (LGP)

The LED light panel utilizes crystal clear acrylic combined with a patented 3D V-groove etched grid pattern that provides even illumination to almost any shape imaginable.



Integrated Thermal Management

All LEDs create heat which is detrimental to their life span. Our LED light panel implements a patented technology which integrates the heat sink into the LGP that is easily conformable which allows for customizable shapes.



OKITE®
ITALIAN QUARTZ

USA
Seieffe Corporation
Importer & Master
Distributor

12227 K FM 529
Northwoods Industrial Park
Houston | Tx 77041
United States
PH: 1.713.849.3800
Toll Free: 1.866.654.8397

New York :
PH: 1.713.849.3800

Los Angeles :
PH: 1.713.849.3800
info@seieffe.us

OKITE.COM