

QUARTZ SURFACING
2019

TECHNICAL
MANUAL

MADE IN ITALY 



OKITE®
OKITE.COM



OKITE Quartz Surfacing

Technical Data

WHAT IS OKITE®

OKITE is a natural quartz surfacing material. Stain and scratch resistant, OKITE is the ideal product for kitchen and bath applications. This beautiful and durable non-porous material is easy to clean and never needs sealing or polishing – a distinctive advantage over granite, marble, limestone or soapstone, which all require routine maintenance. Available in an array of colors, OKITE is the product of choice for nearly all environments, including residential, commercial, hospitality and healthcare projects.

COMPOSITION & APPLICATIONS

OKITE is composed mainly (93%) by natural quartz crystals. OKITE's patented manufacturing process creates a product that is harder, non-porous and easier to maintain compared to other products such as: natural stone (granite, marble, soapstone, limestone), solid surfacing, stainless steel and concrete/glass based surfacing.

Applications of OKITE include:

- kitchen countertops
- shower and tub surrounds
- bathroom vanity tops
- writing desks
- table tops
- partition wall
- shower walls
- wall cladding
- windowsill
- fireplace mantles and surroundings
- food service areas
- wainscots and wall bases
- elevator cab walls

UNIQUE COLORS

OKITE is a natural quartz surfacing material. Highly OKITE is available in an array of colors and patterns, including granite look-alike colors, solid colors and marble look-alike colors. OKITE's color palette features the exclusive "Collezione Venati" with the industry's first and unique "veined" quartz surfacing. "Collezione Venati" delivers the beauty of natural marble with the extraordinary benefits that make OKITE the product of choice for quartz surfaces.

WORLD'S WHITEST STONE

OKITE "1665 - Bianco Assoluto" is now whiter than before. We encourage any Design Professional to request free samples to be compared to other pure white quartz surfaces. We assure you will be amazed!

OKITE PIETRE PREZIOSE

OKITE Pietre Preziose is the world's first and only quartz surfacing inspired by natural onyx. An uplifting kaleidoscope of deep, luminous color that will bring to your interior design projects infinite depth and an irresistible allure of precious stones. In short, it's a luxurious material that will help you solve many of the issues you face in your projects with natural onyx.

CUSTOM COLORS

OKITE Quartz Surfacing can also be manufactured to match specific color requests. A minimum order of 8,000 SF (3/4") or 5,400 SF (1") is requested. Please contact Sieieffe Corporation (info@okite.us - 866 654 8397) to find out more about custom colors.

COLOR CONSISTENCY

OKITE Quartz Surfacing provides excellent color consistency between slabs from the same lot number. As any other quartz surfacing product, slabs from different lot numbers may have a slight difference in color shade. Natural stones (granite, marble, limestone, soapstone) present color inconsistency even within the same batch and certainly from slab to slab.

OKITE Quartz Surfacing

Technical Data

SAMPLES REQUESTS

We provide samples to Architects and Design Professionals in 4" x 4", or 10" x 10". If received by noon E.S.T., sample requests are usually filled the same day. Samples not in stock will take approximately 3-4 days to fabricate. Our standard delivery is Ground at no cost to you. If you require overnight shipping, please let us know and we'll ship your samples accordingly. Samples for Project Approval will be released to contractors after an order has been received.

SPECIAL SIZE SAMPLES

If you need a sample in a size different from the above please let us know. Allow one week for these special requests.

BINDERS REQUEST

Our Product Binders have been designed to serve as an organized reference guide. Each binder contains 2" x 2" and 2" x 4" samples. Binders Requests will take approximately 5-8 days for shipping. Our standard delivery is Ground at no cost to you.

DIMENSIONS & THICKNESSES

OKITE is manufactured into large slabs measuring 120" x 55" (45.83 SF per slab) in the thickness of 3/4" (20 mm) and 1 1/4" (30 mm). OKITE slabs are also available, as special order, in 1/2" (13 mm) thickness.

WEIGHT OF OKITE

1/2" (13 mm) slab: 301 lbs. (136.5 kg) equal to 6.57 lbs./SF (31.85 kg/Square Meter)
3/4" (20 mm) slab: 463 lbs. (210 kg.) equal to 10.10 lbs./SF (49 kg/Square Meter)
1" 1/4 (30 mm) slab: 695 lbs. (315 kg.) equal to 15.15 lbs./SF (73.5 kg/Square Meter)

LIMITATIONS OF OKITE

As any other quartz surfacing product, intense heat and prolonged exposure to hot pots or flames can cause thermal shock, discoloration, or other damage. No damages have been experienced with brief exposures to moderately hot temperatures (up to 300°F (149°C)). In any case, the use of inexpensive hot pads is always recommended. As any other quartz surfacing product, OKITE must be used only for indoor applications and avoid any direct and prolonged contact with heat. When OKITE is used a counter, always use an inexpensive hot pad to avoid contact with heat sources. As any other quartz surfacing product, contact with products containing Trichloroethylene or methylene chloride (acetone, paint removers, etc), abrasives, alkaline levels higher than 8 pH, hydrofluoric acid, liquid bluing, bleach, caustic soda, hydrofluoric acid, dichloromethane, painting solvent and aggressive cleaning products (such as oven or grill cleaners) compromise its surface color, but do not affect its strength. In the event of accidental exposure to these products, thoroughly clean and rinse the surface with clean water immediately.

CERTIFICATIONS

OKITE is certified by GreenGuard Environmental Institute under the "GREENGUARD Standard for Low Emitting Products" and under the "GREENGUARD for Children & Schools product certification programSM", which means OKITE does not emit any gas or VOC (Volatile Organic Compounds). As result, OKITE is much safer than any other surfacing product. OKITE is also certified by NSF to comply with NSF/ANSI 51. As a result, OKITE does not support the growth of mold, mildew and bacteria on its surface.

OKITE & LEED POINTS

OKITE Quartz Surfacing is a LEED contributing product. A complete guide on OKITE & LEED points is available for immediate download at www.okite.us

OKITE Quartz Surfacing

FINISHES & EDGES

OKITE Quartz Surfacing comes with a standard polished finish. A honed finish (which will require more maintenance) is also available as special order. Edge finishes available for OKITE Quartz Surfacing are the same available for natural granite (eased edge, bullnose, half bullnose, ogee, ogee bullnose, etc.).



FLAT POLISH



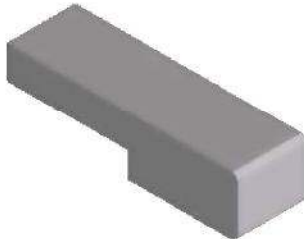
DEMI BULLNOSE



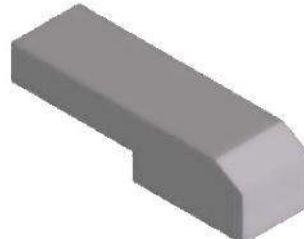
OGEE BULLNOSE



BULLNOSE



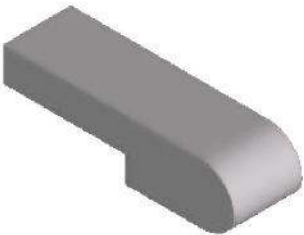
FLAT POLISH



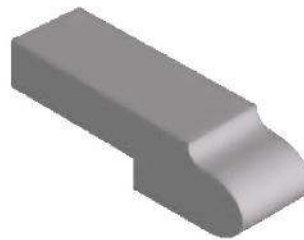
BEVEL



OGEE



BULLNOSE



OGEE



BEVEL

OKITE Quartz Surfacing

HOW TO KEEP YOUR OKITE LOOKING BEAUTIFUL

Thankfully, it's much easier than you might think. Your highly attractive and durable non-porous surface is extremely simple to clean and never needs sealing or polishing. It's also less hassle to maintain than granite, marble, limestone or soapstone. In fact, all you need to do is follow these simple guidelines correctly to keep your OKITE looking beautiful for years to come.

STANDARD EVERYDAY CLEANING GUIDELINES

To clean up accidental spills, simply soak up the spill and wash with a soft cloth, warm water and liquid detergent such as "Windex®", a green alternative, that is also effective is "Seventh Generation Multisurface Cleaner®". That's all there is to it.

HOW TO REMOVE INK STAINS FROM OKITE

The most important step to remove ink stains from OKITE is to act immediately, to avoid the ink penetrating the surface.

To remove ink stains from OKITE, do the following:

- Wear protective gloves;
- Clean the area with Windex and a clean microber cloth;
- Pour 91% Isopropyl Alcohol over the ink stain & let it work for 15-20 seconds. Isopropyl Alcohol will help break down the stain & dilute it;
- Remove Isopropyl Alcohol with a paper cloth, making sure that cabinets and/or other items are not contaminated by alcohol or by the diluted ink;
- Rinse well with hot soapy water and dry with a clean cloth.

REMOVING STUBBORN STAINS

To remove dried-on substances such as chewing gum or food containing mustard or curry, and stains caused by fats, grease or water based paint, start by gently scraping away the residue material with a glass scraper. Then, clean your OKITE top with a non-abrasive cleaning pad and household kitchen spray cleaner such as "Soft Scrub Total Kitchen®". Rinse thoroughly with warm clean water and dry the surface with a clean cloth. Repeat if necessary. As OKITE is harder than a steel blade, excessive scraping may leave a gray metal mark. If this happens clean the area with a recommended cleaner.

CLEANING TEXTURED SURFACES SUCH AS THE AIDA COLLECTION

For normal everyday cleaning, simply soak up the spill and wash with a soft cloth, warm water and liquid detergent such as "Windex®". A green alternative that is also effective is "Seventh Generation Multisurface Cleaner®". For any greasy, oily marks or stains, use a kitchen spray degreaser such as "Soft Scrub Total Kitchen®" for 30 seconds, then rinse well and dry with a clean cloth. For more stubborn marks or stains, use "Soft Scrub Gel with Bleach Cleanser®" on a wet sponge. Work in a large circular motion and clean the entire surface area. Rinse well with hot soapy water and dry with a clean cloth. For any other marks that seemingly can't be removed with normal cleaning, use a wet scouring pad, such as yellow Scotch-Brite®, with a little abrasive cleanser. Work in a large circular motion and clean the entire surface area. Rinse well with hot water and dry with a clean towel or cloth. Please use this cleaning method only if necessary, as continued use of this method may eventually dull the surface of your OKITE top. Honed and AIDA Collection colors are more sensitive to grease or finger prints and may require extra care during routine cleaning.

TO FURTHER PROTECT YOUR OKITE

- On Honed and AIDA colors, remove any stain as it happens;
- Do not seal or have sealed your OKITE. Different from granite, marble, limestone, soapstone or glass & concrete based surfaces, OKITE never needs sealing or polishing;
- Always use hot pads or trivets to protect OKITE from heat sources, such as hot pots.

OKITE® is highly stain resistant to

- Acid
- Oil e.g. olive oil
- Butter
- Coffee
- Tea
- Red or white wine
- Water
- Vinegar
- Mustard
- Soft drinks
- Citric acid
- Condensed milk

- Salt (sodium chloride)
- Blueberries
- Sodium carbonate
- Toothpaste
- Lipstick
- Soapy detergents
- Disinfectants
- Household soaps
- Hand cream
- Shoe polish
- Ink
- Nail polish remover,
To remove, wipe first, then
rinse with clean water

Please DO NOT use any of the following to clean OKITE

- Bleach
- Alkaline cleaning products
- Painting solvent
- Caustic Soda
- Hydrofluoric Acid
- Dichloromethane

For updated care & maintenance instructions, please visit www.okite.com

OKITE Technical Data

Physical Properties

SYMBOL	TEST PERFORMED	TEST STANDARD	RESULTS	NOTE
	Absorption	ASTM C 97	0.005 wt.%	Low absorption contributes to stain resistance and sanitation of OKITE.
	Bulk Density	ASTM C 97	2.38 gr/cm ³ 39.03 gr/in ³	½" OKITE = 100.3 lb/ft. ¾" OKITE = 150.45 lb/ft. 1¼" OKITE = 250.75 lb/ft.
	Flexural Strength	ASTM C 880	5,567.6 psi (Standard Deviation 311.9)	OKITE is stronger than most natural stones.
	Thermal Expansion	ASTM E 228	5.9x10 ⁻⁶ in/in/°F 1.1x10 ⁻⁵ in/in/°C	OKITE requires only small clearances for thermal movement.

Durability

SYMBOL	TEST PERFORMED	TEST STANDARD	RESULTS	NOTE
	Abrasion Resistance (Taber Abraser)	ASTM C 501	187.2	OKITE resists wear and abrasion.
	Freeze-Thaw Resistance	ASTM C 1026	No defects	15 freeze-thaw cycles.
	Mohs Hardness	DIN EN 101	Quartz = 7 on Mohs scale.	Quartz can only be scratched by materials as hard as topaz (8), corundum (9), or diamond (10).

Stain & Chemical Resistance and Cleanability

SYMBOL	TEST PERFORMED	TEST STANDARD	RESULTS	NOTE
	Stain Resistance	ANSI Z 124.6	22 Pass (Passing criterion is 64.)	Tested with 16-hour exposure to crayon, shoe polish, ink, gentian, beet juice, grape, juice, lipstick, hair dye, iodine and tea.
	Wear and Cleanability	ANSI Z 124.6	Pass	Wear: Passes 10,000 cycles/slurry. Cleanability: Loss of light reflectance after standard detergent cleaning. (Passing criterion is ≤5%.)
	Cigarette Test	ANSI Z 124.6	Pass	No visual damage or surface ignition Tested with Marlboro, Doral and Raleigh.
	Chemical Resistance	ANSI Z 124.6	Pass	No visual damage due to 16-hour contact exposure to naphtha, ethyl alcohol, amyl acetate, 10% Ammonia, 10% citric acid, 6% urea, 3% hydrogen peroxide, clorox (S), toluene, ethyl acetate, 1-2% drano (S), acetone, pine oil, vinegar, 5% trisodium phosphate. (S)= slight superficial effect that is removed by dry 600 grit sanding very lightly. No resulting damage after removal.
	Chemical Resistance	ASTM C 650	Slight Stain No Detrimental Effect	Tested with exposure to solution 10% HCL & 10% KOH. Overall evaluation results in no effect on the samples
	Resistance to Fungal Growth	ASTM G 21	No effect	After 21 day incubation period. Fungi spore suspension (ATCC#6205,9348,9642,9644,9645)

Other

SYMBOL	TEST PERFORMED	TEST STANDARD	RESULTS	NOTE
	Static Coefficient of Friction	ASTM C 1028	Dry 0.63 Wet 0.57	
	Flame Spread	ASTM E 84	Class A	

OKITE Quartz Surfacing

OKITE 24 HOUR CHEMICAL RESISTANCE

The test is conducted by applying five drops of each agent reagent on the surface, covered with a watchglass (except for those marked with **). Chemicals marked ** were tested with a saturated cotton ball covered by a bottle. The chemicals were exposed at room temperature for a period of 24 hours, rinsed off with water and evaluated.

ACIDS	NO EFFECT	EXCELLENT	GOOD	FAIR	FAILURE
Hydrochloric Acid (10%)	X				
Hydrochloric Acid (37%)	X				
Sulfuric Acid (33%)	X				
Sulfuric Acid (98%)					X
Nitric Acid (30%)	X				
Nitric Acid (65%)	X				
Phosphoric Acid (85%)	X				
Acetic Acid (99%)	X				
Hydrofluoric Acid (48%)					X
Chromic Acid (60%) - (60% of 10% Stock)	X				

BASES	NO EFFECT	EXCELLENT	GOOD	FAIR	FAILURE
Ammonium Hydroxide	X				
Sodium Hydroxide					X

SALT	NO EFFECT	EXCELLENT	GOOD	FAIR	FAILURE
Silver Nitrate (1%)	X				
Potassium Permanganate (10%)				X	
Ferric (III) Chloride(10%)	X				
Copper Sulfate (10%)	X				
Sodium Hypochlorite (13%)	X				
Sodium Chloride (10%)	X				

ORGANIC CHEMICALS	NO EFFECT	EXCELLENT	GOOD	FAIR	FAILURE
Formaldehyde (37%)	X				
Furfural	X				

SOLVENTS **	NO EFFECT	EXCELLENT	GOOD	FAIR	FAILURE
Acetone	X				
Ethyl Alcohol	X				
Ethylene Glycol	X				
Methyl Ethyl Ketone (MEK)	X				
Dichloromethane	X				
Ethyl Acetate			X		

OKITE 24 Hour Chemical Resistance

SOLVENTS **	NO EFFECT	EXCELLENT	GOOD	FAIR	FAILURE
Acetic Anhydride	X				
n-Butyl Acetate	X				
n-Heane	X				
Methyl Alcohol	X				
Methyl Isobutyl Ketone (MIBK)	X				
Tetrahydrofuran		X			
Toluene	X				
Trichloroethylene	X				
Xylene	X				

BIOLOGICAL STAINS (1% SOLUTIONS)	NO EFFECT	EXCELLENT	GOOD	FAIR	FAILURE
Basic Fuchsin				X	
Carbol Fuchsin			X		
Malachite Green Oxalate				X	
Methylene Blue				X	
Wright Stain				X	
Gentian Violet (Dye)				X	

The tests were conducted professionally by an independent testing lab. All information are based on our current state of knowledge, and is not intended as any form of guarantee with regards to any specific product characteristic. Test result may differ per color.

Above test results, performed by an independent test laboratory, are provided for informational purposes only and are not meant to suggest suitability of OKITE for any specific use or application. Seieffe, or any affiliated third party, shall not be liable in either tort or contract for any loss or direct, indirect, consequential, punitive, special, exemplary or incidental damages arising out of the use or inability to use OKITE surfaces for any specific use or application.

DEFINITIONS:

No effect: no detectable stain, loss of gloss or change in work surface material

Excellent: slight stain or loss of gloss, but no change to the function, smoothness or life of the work surface material

Good: a clearly discernible stain or loss of gloss, but no no change to the function, smoothness or life of the work surface material

Fair: unacceptable staining or discernible deterioration or etching of the work surface material.

Failure: severe stain or moderate deterioration, pitting, cratering or etching of work surface material.

OKITE Quartz Surfacing

Aging Test

OKITE AGING TEST

Sample is tested for resistance to accelerated exposure (ASTM D2565, cycle 1) with color change evaluation (ASTM D2244) after 150, 400, and 800 hours of exposure. Sample is tested for high temperature resistance per “Hot Wax Method” (NEMA LD-3-2005) and “Heated Pan Test” (ANSI Z124.6-2007)

HIGH TEMPERATURE RESISTANCE	SAMPLE
Hot Wax Method (NEMA LD-3, section 3.6.2)	No Effect
Blisters	None
Crazing	None
Delamination	None
Whitening	None
Cracking	None
Heated Pan Test (ANSI Z124.6, section 5.6)	No Effect
Cracking	None
Crazing	None
Blistering	None
Discoloration	None

ACCELERATED AGING (ASTM D2565) SPECIMEN 1				
Hours	L*	a*	b*	ΔE*
Initial	66.52	3.96	13.50	-
150	66.42	3.62	13.45	0.35
400	66.51	3.60	13.38	0.37
800	66.40	3.52	13.74	0.51

ACCELERATED AGING (ASTM D2565) SPECIMEN 2				
Hours	L*	a*	b*	ΔE*
Initial	67.92	3.69	13.23	-
150	68.01	3.26	12.54	0.82
400	67.93	3.04	12.37	1.08
800	67.60	3.26	13.52	0.61

*CIE lab 10°/D65

OKITE shows excellent performance under the above test parameters. A “E under 2 is good, and a “E under 1 is very good in OKITE shows excellent performance under the above test parameters. Above test results, performed by an independent test laboratory, are provided for informational purposes only and are not meant to suggest suitability of OKITE for any specific use or application. Seieffe, or any affiliated third party, shall not be liable in either tort or contract for any loss or direct, indirect, consequential, punitive, special, exemplary or incidental damages arising out of the use or inability to use OKITE surfaces for any specific use or application.

OKITE Comparison Chart between surfacing materials

Comparison Chart between Surfacing Materials

SYMBOL	OKITE QUARTZ SURFACING	GRANITE	MARBLE	CONCRETE & RECYCLED GLASS	SOLID SURFACE
Stain Resistance	Yes	No	No	No	Yes
Need of Sealing & Regular Maintenance	No	Yes	Yes	Yes	No
Natural Appearance	Yes	Yes	Yes	No	No
Different Textures	Yes	No	No	No	No
Absolute White Color	Yes	No	No	No	Possibly
GreenGuard Compliance	Yes	N/A	N/A	Possibly	Possibly
LEED Points	Yes	N/A	N/A	Possibly	Possibly
Safe in Healthcare	Yes	No	No	No	Yes
Color Consistency	Yes	No	No	Yes	Yes
Scratch Resistance	Yes	Yes	No	No	No
NSF Certified	Yes	No	No	Possibly	Yes
15 Year Warranty	Yes	No	No	Possibly	Yes
Custom Color	Yes	No	No	Possibly	Possibly

OKITE Quartz Surfacing

FABRICATION & INSTALLATION

Fabrication and installation of OKITE is similar to that of natural stone. Publications such as “Dimension Stone Design Manual” from the “Natural Stone Institute” can also be consulted and referred to. As a general rule, any stone fabricator able to fabricate granite, will be also able to fabricate OKITE Quartz Surfacing. Proper & recommended techniques are also available as guide specification that have been prepared to assist Architects & Design Professionals in the preparation of a specification section covering OKITE Quartz Surfacing, according to Masterformat 2004 in the following Sections:

- 06 61 19 Quartz Surfacing Fabrication
- 12 36 61 19 Quartz Surfacing Countertops
- 09 30 33 Stone Tiling
- 09 63 40 Stone Flooring
- 09 77 00 Special Wall Surfacing

Editable Word files are ready for download on www.okite.com - www.sweets.com - www.caddetails.com or simply by request to Seieffe Corporation (866 654 8397 - info@okite.us)

OVERHANG & SUPPORT

As a general rule, no support is required for overhangs of OKITE extending up to 12” (300mm) in 3/4” (20mm) material or up to 16” (300mm) in 1” ¼ (30mm) material. Brackets with intervals of 25” are required for all overhangs from 12” to 20” (3/4” material) and from 16” to 24” (1” ¼ material). Additional support (such as: legs, columns or panels) are required for overhangs over 20” (3/4”) and over 24” (1” ¼ material). We also recommend that any seam is positioned over the cabinet rather than in the overhang.

AVAILABILITY

OKITE Quartz Surfacing is NOT available in big box retail stores. Master Distributor & Importer, Seieffe Corporation, keeps a large inventory of product to satisfy and back up demand at any time. For large projects, OKITE Quartz Surfacing can be shipped anywhere in North America in containers, truckloads or LTL. Contact information for Master Distributor is:

SEIEFFE CORPORATION

12227 FM 529 Ste. K Houston, TX 77041
Tel.: 713 849 3800 Toll Free: 866 654 8397 Fax: 713 849 3835 info@okite.us

ARCHITECTURAL REPRESENTATIVES

A contact list of our Architectural Representatives is available on www.okite.us. Design Professionals are encouraged to contact our Representatives for any question or help in the design or specification process.

ADHESIVE CROSS REFERENCE CHART

OKITE SLAB COLOR	INTEGRA SIGNATURE COLLECTION COLOUR MATCH	INTEGRA ALTERNATE MATCH
1001 Bianco Thassos	Winter White - 3181 ¹	
1002 Bianco Statuario	Winter White - 3181 ¹	
1095 Beige Chiaro	Cloud - 3063	
1114 Nero Assoluto	Black - 2080	Satin Black - 3062
1379 Bianco	Newport Grey - 2360	Nougat - 3099
1431 Cotto	Red Pepper - 3051 ¹	
1497 Cioccolato	Marone - 3116	
1605 Autumn Brown	Clay Brown - 2114 ¹	
1606 Royal Gold	Alpha Brown - 2006	Autumn Light - 2032
1621 Crema Caffè	Limestone - 2280	
1625 Bianco Regina	White - 2420	Glacier White - 3006
1628 Beige Fiorito	Desert - 2197	
1642 Crema	Cotton - 3141 ¹	
1665 Bianco Assoluto	Ultra White - 3231	Perfect White - 3172
1674 Arancio	Pumpkin - 3117 ¹	
1701 Verde Medea	Medea - 3186 ¹	

OKITE Adhesive Cross Reference Chart

OKITE SLAB COLOR	INTEGRA SIGNATURE COLLECTION COLOUR MATCH	INTEGRA ALTERNATE MATCH
1702 Blu notte	Satin Black - 3062	
1703 Nero Ebano	Satin Black - 3062	
1711 God Stone	Nile - 3068	Giallo - 3127
1713 Beige Royal	Limestone - 2280	
1715 Afyon	Limestone - 2280*	
1717 Roman Stone	Limestone - 2280	
1801 Verde Oriente	Medea - 3186 ¹	
1802 Blu Persia	Satin Black - 3062	
1804 Nero Reale	Satin Black - 3062	
1809 Calacatta Gold	Ultra White - 3231	
1810 Calacatta White	Ultra White - 3231	
1881 Prisma Blu Capri	Custom	
1896 Bianco Carrara	Nougat - 3099	
1909 Blu Acqua	Custom	
1910 Grigio	Cinder - 3074	Newgale Grey - 2340*
1911 Grigio Nordico	Meteor Grey - 2320	
1912 Rosso	Custom	
1926 Crema Botticino	Champagne - 3118	
1927 Crema Marfil	Beach - 2065	
1929 Giallo Michelangelo	Nile - 3068	
1930 Royal Brown	Royal Brown - 3115 ¹	Giallo - 3127
1931 Arabescato Verde	Newport Grey - 2360	Amazon - 3098
2003 Prisma Rosso	Custom	White North - 2440
2005 Prisma Bianco	Newport Grey - 2360	
2006 Prisma Giallo	Custom	White North - 2440
2007 Prisma Blu	Sapphire - 0210	
2008 Prisma Grigio	Quarry - 2375	
2009 Prisma Nero	Black - 2080	Satin Black - 3062
2241 Copper Galaxy	Espresso - 3104	
2244 Desert Dust	Coral Troya - 2194	
2245 Royal Palm	Sage - 3054	Beige Olimpo - 2060
2248 Indigo Galaxy	Desert - 2197	
2249 Brownstone Galaxy	Earth - 3077	Espresso - 3104
2250 Autumn Dusk	Rust - 3059	
2251 Tarragon	Earth - 3077	
2253 Moka Cream	Beach - 2065	Limestone - 2280
5002 Medina	Desert - 2197	
9002 Pietre Preziose	Chameleon - 3008	
9003 Pietre Preziose	Crystal Clear - 1000	
9004 Pietre Preziose	Chameleon - 3008	

* Requires a good fit

End user should verify suitability prior use. Refer to MSDS for safety and handling information.

For additional information, instructions & prices, please contact manufacturer of adhesives:

Integra Adhesives Toll Free #: 888.862.6665 - Web: www.integra-adhesives.com

OKITE Quartz Surfacing

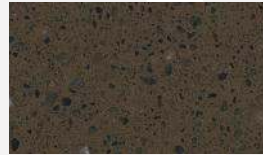
PROJECT



5009 Bianco Pro



5010 Beige Pro

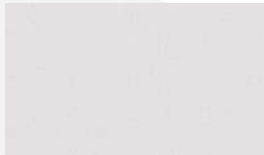


5006 Visone



5008 Corvino

GROUP A



1663 Bianco Classico



1717 Roman Stone



1405 Grigio Scuro

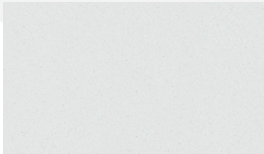


1432 Grigio Chiaro



1114 Nero Assoluto

GROUP B



● **1665** Bianco Assoluto



1642 Crema



● **1715** Afyon



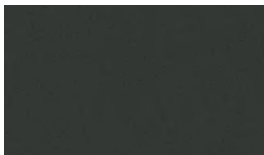
● **1911** Grigio Nordico



1916 Grigio Assoluto



1915 Antracite



● **1701** Verde Medea



1809 Calacatta Gold



1810 Calacatta White



● **1896** Bianco Carrara



4001 White Avion



1931 Arabescato Verde



1926 Crema Botticino



2253 Moka Cream



1813 Marrone Imperiale



4002 Ocean Grey



4003 Mystic Grey



1932 Grigio Bardiglio



● **1801** Verde Oriente



4004 Marquinia Black



● **1804** Nero Reale



2005 Prisma Bianco



2009 Prisma Nero

OKITE Quartz Surfacing

EASY



1705 Easy White



1706 Easy Beige



1707 Easy Brown

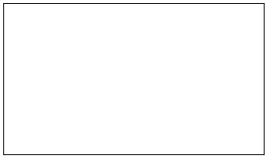


1710 Easy Bronze

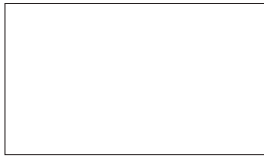


1709 Easy Grey

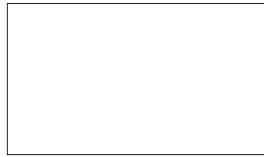
GROUP C



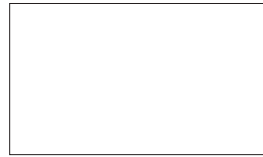
8050 Statuario Extra



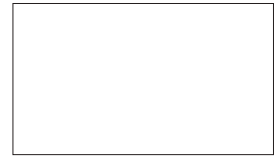
8061 Carrara Gioia



8062 Grigio Oriente



8063 Fior di Bosco

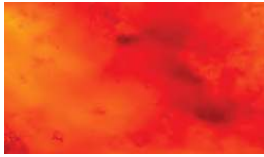


8064 Nero di Ormea

TRANSLUCENT COLLECTION



● 9002



● 9003



● 9004

Legend:

(P) Available in polished finish

(R) Recycled content - (SP) Special Order - (ST) Standard Color - in stock

Each color is purely indicative. Manufacturer, Distributor and/or Fabricator cannot be held responsible if the end product has a slight aesthetic difference.

- Also available in honed finish, in 3/4" (20mm) thickness only (honed finish requires more maintenance)
- Available only in 3/4" (20mm) Thickness
- Available only in 5/8" (15mm) Thickness



OKITE®
ITALIAN QUARTZ

USA
Seieffe Corporation
Importer & Master
Distributor

12227 K FM 529
Northwoods Industrial Park
Houston | Tx 77041
United States
PH: 1.713.849.3800
Toll Free: 1.866.654.8397

New York :
PH: 1.713.849.3800

Los Angeles :
PH: 1.713.849.3800
info@seieffe.us

OKITE.COM